

## MA258 (cn\_en) 装配说明

### 保护帽 PV-BVK4, PV-SVK4

#### 目录

安全须知 .....	2
保护帽的兼容性 .....	3
保护帽插头的插入方向 .....	4
保护帽插座的插入方向 .....	4

## MA258 (cn\_en) Assembly instructions

### Sealing caps PV-BVK4, PV-SVK4

#### Content

Safety Instructions .....	2
Compatibility of the sealing caps .....	3
Clip on male sealing caps .....	4
Clip on female sealing caps .....	4



公电缆连接器用保护帽  
Sealing cap for male cable coupler

型号/Type: PV-SVK4  
订单号/Order No.: 32.0717



母电缆连接器用保护帽  
Sealing cap for female cable coupler

型号/Type: PV-BVK4  
订单号/Order No.: 32.0716

## 安全说明

### 安装说明的重要性

不遵守安装说明可能会因电击、电弧、火灾或系统故障而导致危及生命的人身伤害。

- 请完全按照安装说明要求进行操作。
- 只能根据安装说明和技术数据连接和使用产品。
- 请保管安装说明, 并将其移交给后续用户。

### 预期用途

密封盖用于当连接器未插合时防止污垢和湿气的进入。可以防止金属接触部件的腐蚀。

### 对人员的要求

仅电工或接受过电气指导的人员可以装配、安装和调试该系统。

- 电工是指接受过适当的专业培训, 并具有适当的知识和经验的人员, 能够识别和避免可能来自电力的危险。电工能够选择和使用合适的个人防护设备。
- 受过电气指导人员是指在电工的指导或监督下, 能够识别和避免可能来自电力的危险的人员。

### 保护帽的使用要求

切勿使用有明显损坏的保护帽。

### 安全固定与安装

即使在光伏系统断开并且插头连接器断开后, 有功部件也可以保持带电。

### 连接或断开连接

- 在连接或断开连接器之前, 务必切断光伏系统。

### 请勿调整或修理组件

- 安装后不要改装保护帽。
- 更换有缺陷的保护帽。

## Safety instructions

### Importance of the assembly instructions

NOT following the assembly instructions could result in life-threatening injuries due to electric shock, electric arcs, fire, or failure of the system.

- Follow the assembly instructions in full.
- Only connect and use the product in accordance with these assembly instructions and the technical data.
- Keep the assembly instructions and pass them on to subsequent users.

### Intended use

The sealing caps are used to protect against the ingress of dirt and moisture when the connector is unmated. This prevents corrosion of the metal contact parts.

### Requirements for personnel

Only an electrician or electrically instructed person may assemble, install, and commission the system.

- An electrician is a person with appropriate professional training, knowledge, and experience to identify and avoid the dangers that may originate from electricity. An electrician is able to choose and use suitable personal protective equipment.
- An electrically instructed person is a person who is instructed or supervised by an electrician and can identify and avoid the dangers that may originate from electricity.

### Requirements for using the protective caps

NEVER use an obviously damaged sealing caps.

### Safe mounting and installation

Active parts can remain live even after the PV system has been disconnected and the plug connectors disconnected.

### Mating and disconnecting

- ALWAYS de-energize the PV system before mating and disconnecting the connectors.

### Do NOT modify or repair component

- Do NOT modify sealing caps after assembly.
- Replace defective sealing caps.

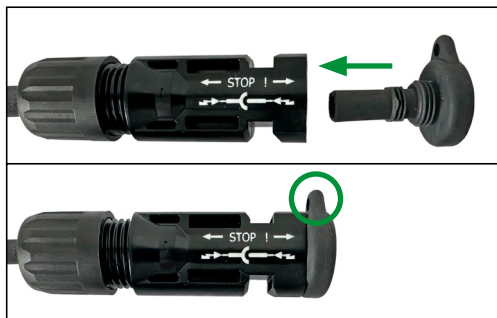
## 保护帽的兼容性

## Compatibility of the sealing caps

	适用于	Suitable for
公电缆连接器用保护帽 Sealing caps for male cable coupler	<b>公电缆连接器 MC4</b> 型号: PV-KST4	<b>Male cable coupler MC4</b> Type: PV-KST4
	<b>公电缆连接器 MC4-Evo 2</b> 型号: PV-KST4-EVO 2A	<b>Male cable coupler MC4-Evo 2</b> Type: PV-KST4-EVO 2A
	<b>公面板插座 MC4</b> 型号: PV-ADSP4	<b>Male panel receptacle MC4</b> Type: PV-ADSP4
	<b>分支插头 MC4</b> 型号: PV-AZS4	<b>Branch plug MC4</b> Type: PV-AZS4
	<b>分支插头 MC4-Evo 2</b> 型号: PV-AZS4-EVO 2	<b>Branch plug MC4-Evo 2</b> Type: PV-AZS4-EVO 2
	<b>分支插座 MC4</b> 型号: PV-AZB4	<b>Branch socket MC4</b> Type: PV-AZB4
	<b>分支插座 MC4-Evo 2</b> 型号: PV-AZB4-EVO 2	<b>Branch socket MC4-Evo 2</b> Type: PV-AZB4-EVO 2
母电缆连接器用保护帽 Sealing caps for female cable coupler	<b>母电缆连接器 MC4</b> 型号: PV-KBT4	<b>Female cable coupler MC4</b> Type: PV-KBT4
	<b>母电缆连接器 MC4-Evo 2</b> 型号: PV-KBT4-EVO 2A	<b>Female cable coupler MC4-Evo 2</b> Type: PV-KBT4-EVO 2A
	<b>母面板插座 MC4</b> 型号: PV-ADBP4	<b>Female panel receptacle MC4</b> Type: PV-ADBP4
	<b>分支插座 MC4</b> 型号: PV-AZB4	<b>Branch socket MC4</b> Type: PV-AZB4
	<b>分支插座 MC4-Evo 2</b> 型号: PV-AZB4-EVO 2	<b>Branch socket MC4-Evo 2</b> Type: PV-AZB4-EVO 2
	<b>分支插头 MC4</b> 型号: PV-AZS4	<b>Branch plug MC4</b> Type: PV-AZS4
	<b>分支插头 MC4-Evo 2</b> 型号: PV-AZS4-EVO 2	<b>Branch plug MC4-Evo 2</b> Type: PV-AZS4-EVO 2

### 保护帽插头的插入方向

按左侧图片所示方向, 插入保护帽插头。

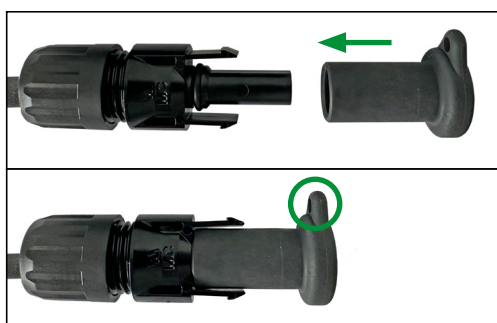


### Clip on male sealing caps

Push on the male sealing cap completely so that the fastening eye is aligned to the locking clip slot.

### 保护帽插座的插入方向

按左侧图片所示方向, 插入保护帽插座。



### Clip on female sealing caps

Push on the female sealing cap completely so that the fastening eye is aligned to the locking clip slot.

**制造商:/Manufacturer:**  
**Stäubli Electrical Connectors AG**  
 Stockbrunnenrain 8  
 4123 Allschwil/Switzerland  
 Tel. +41 61 306 55 55  
 Fax +41 61 306 55 56  
 mail ec.ch@staubli.com  
 www.staubli.com/electrical